



September 1996

EMBARGOED UNTIL 11:30 AM FRI 6 SEPTEMBER 1996

# Tasmanian Statistical Indicators



Statistics ■



**TASMANIAN STATISTICAL INDICATORS  
SEPTEMBER 1996**

**Denis W. Rogers  
Deputy Commonwealth Statistician  
and Government Statistician of Tasmania**

**AUSTRALIAN BUREAU OF STATISTICS**

**CATALOGUE NO. 1303.6**



## CONTENTS

MAIN FEATURES	Page
	v
<b>TABLES</b>	
<b>1</b> Population	1
<b>2</b> Births, deaths and marriages registered	1
<b>3</b> Labour force status	2
<b>4</b> Labour force status by region, males	3
<b>5</b> Labour force status by region females	4
<b>6</b> Labour force status by region, persons	5
<b>7</b> Teenage labour market	6
<b>8</b> All employed persons by occupation	7
<b>9</b> Employed wage and salary earners, sector and industry	8
<b>10</b> Average hours worked	8
<b>11</b> Job vacancies	9
<b>12</b> Industrial disputes	9
<b>13</b> Average weekly earnings of employees	10
<b>14</b> Weekly award rates of pay indexes	10
<b>15</b> Summary of annual movements in wages and prices	11
<b>16</b> House price index numbers, Hobart	11
<b>17</b> Consumer price index, Hobart and eight capital cities combined	12
<b>18</b> Price index of materials used in building other than house building, Hobart	13, 14
<b>19</b> Miscellaneous indicators of production (production of selected commodities)	15
<b>20</b> Livestock slaughtering, numbers	16
<b>21</b> Livestock slaughtering	16
<b>22</b> Meat production	17
<b>23</b> Principal mineral concentrates produced	17
<b>24</b> Sawmills and plywood mills, logs delivered and timber produced	18
<b>25</b> Chipping and grinding of wood	18
<b>26</b> Logs delivered for milling or chipping	19
<b>27</b> Building approvals	20
<b>28</b> Dwelling commencements	20

- 
- INQUIRIES**
- *for further information about statistics in this publication and the availability of related unpublished statistics, contact the Hobart office of the ABS on (002) 20 5800.*
  - *for information about other ABS statistics and services, please refer to the back page of this publication.*
-

	Page
<b>29</b> Banking statistics	21
<b>30</b> Private new capital expenditure by type of asset	21
<b>31</b> Passenger arrivals and departures	22
<b>32</b> Passenger arrivals by air and sea into Tasmania	22
<b>33</b> Accommodation statistics	23
<b>34</b> Registrations of new motor vehicles	24
<b>35</b> Turnover of retail establishments at current prices	24
<b>36</b> Major Statistical Indicators—Australian and State comparisons	25
 EXPLANATORY NOTES	 26

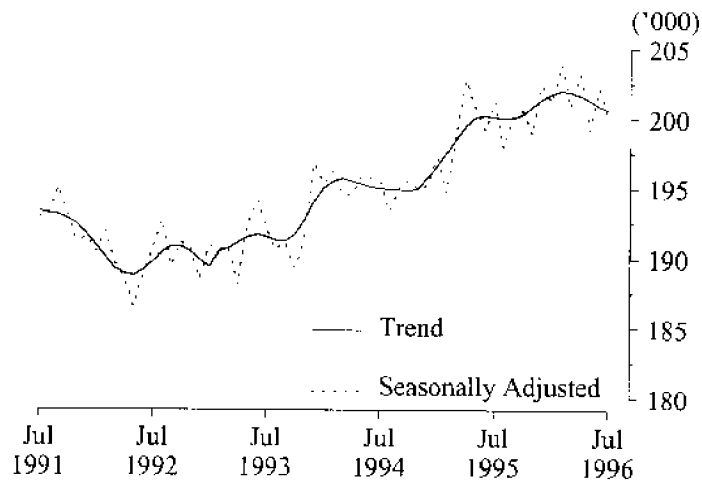
## MAIN FEATURES

### EMPLOYMENT

State comparisons  
trend estimates

The Australian and State *trend series* comparisons are given on page 25. There was an increase of 0.2% in Tasmania's employment over the year to July 1996. The largest percentage increase in employment was in Queensland (1.6%), followed by South Australia (1.1%), Victoria (0.9%), New South Wales (0.7%), and Western Australia (0.7%).

### EMPLOYMENT, TASMANIA



Regional comparisons  
original terms

In the Hobart and Southern Statistical Divisions the estimate of employment in *original* terms in June 1996 was 98,900 and compares with 101,700 in June 1995. The estimate of employment in the Northern Statistical Division in June 1996 was 58,000 and compares with 54,200 in June 1995. The estimate of employment in the Mersey-Lyell Statistical Division was 44,300 in June 1996, and compares with 42,600 for June 1995.  
(See tables 3-8, pages 2-7.)

### THE LABOUR FORCE

Trend estimates

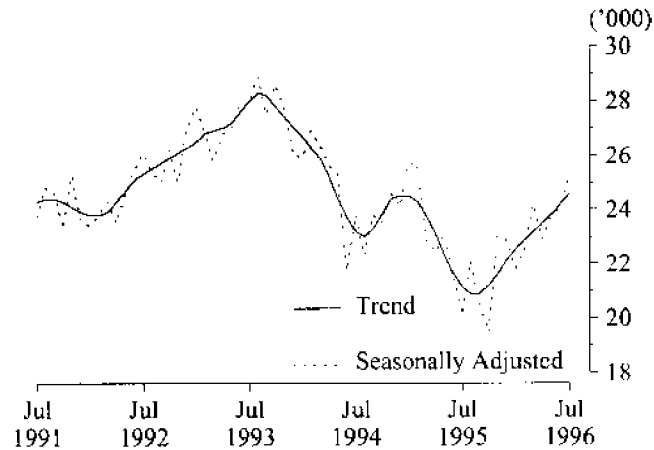
The estimate of civilian Tasmanians aged 15 or more in July 1996 was 368,600 persons. There were an estimated 225,200 persons (based on *trend* estimates) in the labour force, yielding a labour force participation rate in July 1996 of 61.1%, compared with 60.2% in July 1995.

For males, the *trend* estimate of the participation rate was 72.2%, compared with 70.5% for July 1995. For females, the *trend* estimate of the participation rate was 50.4%, compared with 50.3% in July 1995.  
(See table 3, page 2.)

## UNEMPLOYMENT

Trend estimates The Tasmanian provisional *trend* estimate of 24,600 unemployed persons in July 1996 was an increase of 3,500 on the figure for July 1995 of 21,100. The provisional *trend* estimate of the unemployment rate of 10.9% in July 1996 compared with 9.5% in July 1995. (See tables 3-8, pages 2-7.)

### UNEMPLOYMENT, TASMANIA



## EMPLOYED WAGE AND SALARY EARNERS

Original terms In *original* terms, there were approximately 137,600 employed wage and salary earners in Tasmania in March 1995. In March 1993 the figure was 147,100 employed wage and salary earners.

In *original* terms, the Tasmanian public sector accounted for 31.7% of all employed wage and salary earners in February 1995. Overall, the category Community services had the highest industry representation, 27.8%, compared with the equivalent figure of 24.9% recorded in February 1993. The next highest industry grouping was Wholesale trade and Retail trade (19.4%, compared with 20.8% in February 1993) and Manufacturing (15.2%, compared with 14.8% in February 1993).

In *original* terms, women made up 45.5% of employed wage and salary earners in February 1995. In February 1993, the equivalent figure was 44.8%.

(See table 9, page 8.)

## AWARD RATES OF PAY INDEXES

Original terms The annual movements from June 1995 to June 1996 of weekly award rates of pay indexes for Tasmania were 1.2% for full-time adult females and 1.3% for full-time adult males, for a combined annual increase of 1.3%. For Australia, the figures were 1.2% for females and 1.0% for males, for a combined annual increase of 1.1%.



For full-time adult female employees in Tasmania, the largest industry increases over this 12 month period occurred in the Manufacturing industry (3.4%); and the Public administration and defence industry (2.9%).

For the same period for full-time adult male employees in Tasmania, the largest industry increases occurred in the Transport and storage industry (2.9%); and the Manufacturing industry (2.0%).

The largest occupation increase over the same period for full-time adult female employees occurred in Tradespersons (3.7%); and Plant and machine operators, and drivers (2.1%).

For full-time adult male employees the largest occupation increases over the period occurred in Plant and machine operators, and drivers (2.1%); Clerks (1.7%); and Salespersons and personal services workers (also 1.7%).

Source: *Award Rates of Pay Indexes*, ABS catalogue number 6312.0. (See table 14, page 10.)

## BUILDING MATERIALS PRICE INDEXES

Original terms The price index for house building materials in Hobart increased by 0.7% for the twelve months ending June 1996, compared with 4.4% for the twelve months ending June 1995, and 1.0% for the same period in 1993.

For materials used in other than house building, the price index in Hobart rose by 1.0% for the year ending June 1996, compared with 3.3% for 1995, and 1.4% in 1993.

Building components which registered the highest change in Hobart over the year to June were paint and other coatings (up 8.4%), clay bricks (up 5.4%), and pre-cast concrete products (up 4.8%). A fall of 9.5% was recorded in the price index for structural timber over the year to June 1996.

(See tables 15 and 18, pages 11 and 13.)

## CONSUMER PRICE INDEX

Original terms The consumer price index: all groups for Hobart rose by 0.4% in the June quarter 1996, and by 3.0% for the year ending June. The all groups index for the weighted average of the eight capital cities rose by 0.7% for the June quarter, bringing it to 3.1% for the year ending June.

Quarterly increases recorded in other State capitals were 0.7% in Sydney, 0.8% in Melbourne, 0.7% in Brisbane, 0.3% in Adelaide, 0.7% in Perth, 0.8% in Darwin, and 0.5% in Canberra.

The highest annual increase was recorded in Sydney (3.9%), and the lowest (2.6%) in both Melbourne and Perth.

Major contributors to the annual change at the national level were cigarette and tobacco prices (up 14.4%), vehicle insurance (up 10.0%), petrol (up 4.8%), beer (up 5.7%), mortgage interest charges (up 2.3%), and hospital and medical services (up 4.6%), with falls in local government rates and charges (down 4.2%), video and sound equipment (down 7.8%), fresh vegetables (down 8.3%) and fresh potatoes (down 18.9%).

The underlying rate of inflation, as defined by the Commonwealth Treasury, increased by 0.8% for the June quarter 1996, and 3.1% for the year ending June.

Source: *Consumer Price Index*, June quarter 1996, ABS catalogue number 6401.0, \$13.50.

(See table 17, page 12.)

## LIVESTOCK SLAUGHTERING

Trend estimates The June 1996 Tasmanian *trend* estimate for the slaughtering of cattle and calves was 2.9% higher than that recorded in May 1996. The number of pigs slaughtered decreased by 2.6% while the number of sheep and lambs slaughtered decreased by 1.2%.

The *trend* estimate for the slaughtering of sheep and lambs was 62,162 in June 1996, 15.1% below the 73,182 slaughtered in June 1995. The slaughtering of sheep and lambs continued to decline from a high of 71,171 in December 1995.

The *trend* estimate of 6,331 pigs slaughtered in June 1996 was 16.2% below the 7,555 slaughtered in June 1995. This was the fifth successive month of decline in the number of pigs slaughtered in Tasmania.

The *trend* estimate of the number of cattle and calves slaughtered was 20,084, 4.7% below the 21,066 slaughtered in June 1995.

(See table 20, page 16.)

## BUILDING APPROVALS

There were 194 new dwelling units approved during June 1996 in Tasmania. This was an increase of 10.9% on the number recorded for May 1996 (175) but a 6.7% decrease on the number recorded for June 1995 (208). The *trend* estimate for the number of new dwelling units approved continued to fall in June, decreasing 2.0% on last month.

For the twelve months ended June 1996 there were 2,539 new dwelling units approved, 20% below the 3,172 units recorded for the twelve months ended June 1995.

The highest number of dwelling units approved in June 1996 was recorded by the City of Clarence with 37, followed by the City of Hobart with 24, the Municipality of Sorell with 19 and the City of Glenorchy with 16.

The highest number of dwelling units approved in the twelve months to June 1996 was recorded by the City of Hobart with 320, followed by the City of Clarence with 209, the Municipality of Kingborough with 198 and the City of Launceston with 180.

The value of all building approved, at current prices, in June 1996 was \$31.3 million, 37% below the May 1996 figure of \$49.5 million and 8% below the June 1995 figure of \$33.8 million.

The value of all building approved, at current prices, for the year 1995-96 was \$471.1 million, 6% above the 1994-95 figure of \$446.2 million but 3% below the 1993-94 figure of \$487.4 million.

(See table 27, page 20.)

## GROSS STATE PRODUCT

Tasmanian Gross State Product grew 6.1% during the 1994-95 financial year, increasing from \$9,159 million in 1993-94 to \$9,719 million in 1994-95 as measured by current prices. The Northern Territory recorded the largest annual growth of 10.6%, while the Australian Capital Territory recorded the lowest, with 3.1%. Tasmanian growth was just below the national movement, Australian Gross Domestic Product growing 6.3% during the 1994-95.

The total Gross Domestic Product for Australia during the 1994-95 financial year was \$455,732 million. Tasmania's percentage share of total Gross Domestic Product (GDP) as measured by market prices was 2.1%. New South Wales has the largest percentage share of GDP with 34.6%, while the Northern Territory has the smallest percentage share with 1.1%.

Source: *Australian National Accounts, State Accounts, 1994-95*, ABS catalogue number 5220.0, \$24.00.

## NEW MOTOR VEHICLE REGISTRATIONS

Original series There were 994 new motor vehicles (excluding motorcycles) registered in Tasmania during June 1996. This was 17.3% below the 1,202 registered in May 1996 and 18.1% below the figure for June 1995 (1,214).  
(See table 34, page 24.)

## RETAIL

Trend estimates The *trend* estimate for turnover of retail and selected service establishments for June 1996, in Tasmania, was \$249.8 million, an increase of 5.3% on the June 1995 figure of \$237.3 million. Over the last three months the *trend* estimate growth rate has been steady at 0.4%. Recreational good retailing is the only group in decline for June 1996.

The *trend* estimate of turnover for June 1996, for Australia (\$10,188.4 million), was 5% higher than for June 1995 (\$9,726.3 million). The trend estimate of retail turnover increased by 0.1% between May 1996 and June 1996. The monthly trend estimate has increased, although at a declining rate, for the past fourteen months from 1.0% in May 1995 to 0.1% for June 1996.

Original terms In *original* terms, the estimate of retail turnover in June 1996, for Tasmania, was \$230.6 million, 1.8% above the figure recorded for June 1995 (\$226.6 million).  
(See table 35, page 24.)



# 1

## POPULATION: Original

Year or quarter	Estimated resident population at end of period	Natural increase <sup>1</sup>	Net estimated migration gain	Total population growth	Annual growth rate <sup>2</sup>
	'000	'000	'000	'000	%
<b>Year ended 30 June</b>					
1992	469.7	3.2	- 0.3	2.9	0.62
1993	471.4	3.1	- 1.5	1.7	0.35
1994	472.6	3.1	- 2.0	1.1	0.24
1995 p	473.0	2.9	- 2.3	0.6	0.12
<b>Quarter</b>					
<b>1994</b>					
September p	472.8	0.6	- 0.3	0.3	0.19
December p	472.8	0.8	- 0.8	0.0	0.13
<b>1995</b>					
March p	473.2	0.9	- 0.5	0.4	0.21
June p	473.0	0.6	- 0.8	- 0.2	0.12
September p	473.3	0.7	- 0.5	0.2	0.11
December p	473.2	0.5	- 0.6	- 0.1	0.09

<sup>1</sup> Excess of live births registered over deaths registered (based on usual State of residence).

<sup>2</sup> Percentage growth from same quarter in previous year.

(Source: Australian Demographic Statistics, ABS catalogue number 3101.0)

# 2

## BIRTHS, DEATHS AND MARRIAGES REGISTERED: Original

Year or quarter	Births		Deaths		Infant mortality <sup>1</sup>		Marriages	
	No.	Rate <sup>2</sup>	No.	Rate <sup>2</sup>	Deaths	Rate <sup>3</sup>	No.	Rate <sup>2</sup>
<b>Year ended 31 December</b>								
1991	6 857	14.7	3 664	7.9	61	8.9	3 069	6.6
1992	6 956	14.8	3 722	7.9	43	6.2	3 081	6.6
1993	6 804	14.4	3 618	7.7	37	5.4	3 055	6.5
1994	6 836	14.5	3 909	8.3	46	6.7	2 887	6.1
1995 p	6 567	13.9	3 793	8.0	46	7.0	2 834	6.0
<b>Quarter</b>								
<b>1993</b>								
December	1 647	..	887	..	6	3.6	786	..
<b>1994</b>								
December	1 702	..	883	..	9	5.9	768	..
<b>1995</b>								
March p	1 812	..	903	..	10	5.5	1 061	..
June p	1 613	..	1 017	..	15	9.3	667	..
September p	1 696	..	967	..	12	7.1	307	..
December p	1 446	..	906	..	9	6.2	799	..

<sup>1</sup> Registered deaths of children under one year of age.

<sup>2</sup> Rate per 1,000 of estimated mean population.

<sup>3</sup> Rate per 1,000 live births.

(Source: Australian Demographic Statistics, ABS catalogue number 3101.0)

## 3

LABOUR FORCE STATUS<sup>1</sup>: Seasonally adjusted and trend

Month	Seasonally adjusted series.				Trend series <sup>2</sup>			
	Employed	Unemployed	Unemployment rate	Participation rate	Employed	Unemployed	Unemployment rate	Participation rate
	('000)	('000)	%	%	'000	'000	%	%
MALES								
<b>1995</b>								
July	114.1	12.9	10.1	70.3	113.5	13.7	10.8	70.5
August	112.6	14.4	11.3	70.3	113.1	13.4	10.6	70.1
September	112.9	13.4	10.6	69.9	112.9	13.2	10.5	69.8
October	113.2	11.7	9.3	69.1	113.0	13.2	10.5	69.9
November	112.8	13.6	10.8	70.0	113.5	13.4	10.6	70.2
December	113.8	14.7	11.4	71.0	114.1	13.8	10.8	70.7
<b>1996</b>								
January	114.7	14.0	10.9	71.1	114.9	14.1	11.0	71.3
February	117.0	14.0	10.7	72.4	115.4	14.5	11.2	71.8
March	115.5	15.0	11.5	72.1	115.7	14.8	11.3	72.1
April	116.3	15.3	11.6	72.6	115.8	15.0	11.4	72.2
May	114.5	15.0	11.6	71.5	115.7	15.1	11.6	72.2
June	116.2	15.2	11.6	72.5	115.5	15.3	11.7	72.2
July	114.9	15.5	11.9	71.9	115.3	15.4	11.8	72.2
FEMALES								
<b>1995-</b>								
July	86.5	7.2	7.7	50.2	86.6	7.3	7.8	50.3
August	86.2	7.7	8.2	50.3	86.8	7.5	7.9	50.5
September	87.5	7.1	7.5	50.7	87.1	7.7	8.1	50.7
October	87.9	7.9	8.2	51.2	87.3	8.0	8.4	51.0
November	86.7	9.4	9.8	51.4	87.4	8.2	8.6	51.1
December	88.2	8.2	8.5	51.5	87.3	8.4	8.7	51.1
January	86.5	7.8	8.2	50.4	87.0	8.4	8.8	51.0
<b>1996</b>								
February	86.9	8.4	8.9	50.9	86.6	8.4	8.8	50.7
March	85.3	9.1	9.7	50.4	86.2	8.4	8.9	50.5
April	87.0	7.6	8.0	50.5	85.9	8.5	9.0	50.4
May	84.6	8.7	9.3	49.8	85.6	8.7	9.2	50.4
June	86.0	8.9	9.3	50.6	85.4	8.9	9.5	50.4
July	85.0	9.7	10.3	50.5	85.3	9.2	9.7	50.4
TOTAL								
<b>1995</b>								
July	200.6	20.1	9.1	60.1	200.1	21.1	9.5	60.2
August	198.8	22.1	10.0	60.1	200.0	20.9	9.5	60.1
September	200.4	20.5	9.3	60.1	200.0	20.9	9.5	60.1
October	201.0	19.5	8.9	60.0	200.3	21.2	9.6	60.3
November	199.6	23.0	10.3	60.5	200.9	21.6	9.7	60.5
December	201.9	22.9	10.2	61.1	201.4	22.1	9.9	60.8
<b>1996</b>								
January	201.2	21.8	9.8	60.6	201.8	22.5	10.0	61.0
February	203.9	22.5	9.9	61.5	202.0	22.9	10.2	61.1
March	200.8	24.2	10.7	61.1	201.9	23.2	10.3	61.1
April	203.2	22.9	10.1	61.4	201.7	23.5	10.4	61.1
May	199.2	23.7	10.6	60.5	201.3	23.8	10.6	61.1
June	202.2	24.1	10.6	61.4	200.9	24.2	10.8	61.1
July	199.8	25.2	11.2	61.1	200.6	24.6	10.9	61.1

<sup>1</sup> For explanation of terms and concepts, refer to The Labour Force, ABS catalogue number 6203.0

<sup>2</sup> Trend series revised each month. Users should be aware that the latest observations may be revised substantially.  
(Source: Labour Force Australia, ABS catalogue number 6203.0)

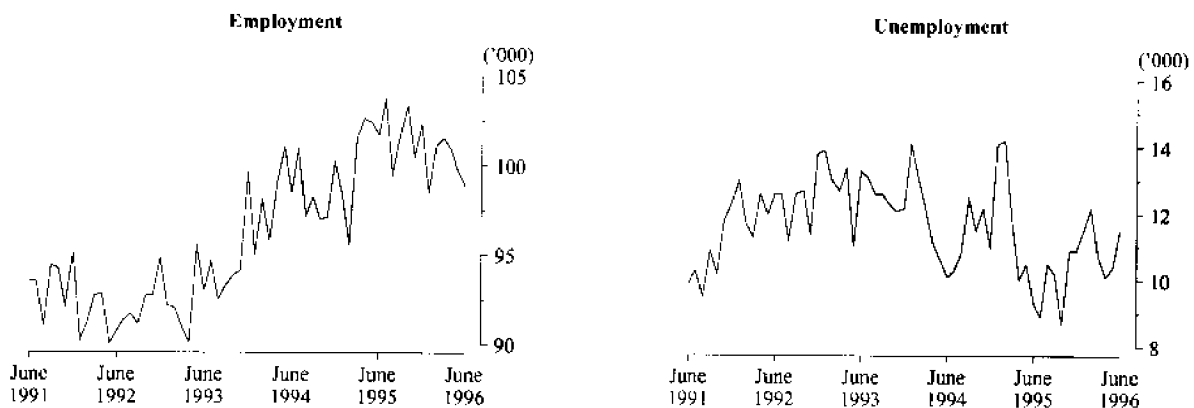
## 4

LABOUR FORCE STATUS, MALES<sup>1, 2</sup>: **Original**

Month		Total employed ( <sup>'000</sup> )	Total unemployed ( <sup>'000</sup> )	Unemployment rate %	Participation rate %
HOBART AND SOUTHERN STATISTICAL DIVISIONS					
1993	June	51.8	7.7	12.9	67.8
1995	June	56.5	6.6	10.4	71.2
1996	April	56.6	6.6	10.5	70.8
	May	56.0	6.7	10.6	70.0
	June	55.6	7.4	11.8	71.0
NORTHERN STATISTICAL DIVISION					
1993	June	31.9	5.1	13.8	73.8
1995	June	31.9	4.2	11.7	71.6
1996	April	32.2	4.6	12.4	73.6
	May	32.3	3.9	10.8	72.3
	June	33.2	4.3	11.3	74.3
MERSEY-LYELL STATISTICAL DIVISION					
1993	June	25.1	5.0	16.7	74.8
1995	June	24.3	3.6	12.9	67.5
1996	April	27.3	3.0	9.8	72.2
	May	26.6	3.5	11.5	72.5
	June	26.6	3.5	11.6	71.8
TASMANIA					
1993	June	108.8	17.8	14.1	71.1
1995	June	112.8	14.4	11.3	70.5
1996	April	116.1	14.2	10.9	71.9
	May	115.0	14.0	10.9	71.2
	June	115.4	15.2	11.6	72.1

1 For explanation of terms and concepts, refer to *Labour Force, Australia*, ABS catalogue number 6203.0.

2 Data in this table are original series, i.e. they are not part of a seasonally adjusted or a trend series. Accordingly, care should be exercised when using these data. New monthly data from each quarter (March, June, September and December) are published two months after the quarter. (Source: Labour Force Estimates—microfiche tables.)

Hobart and Southern Statistical Divisions—Persons: **Original**

# 5

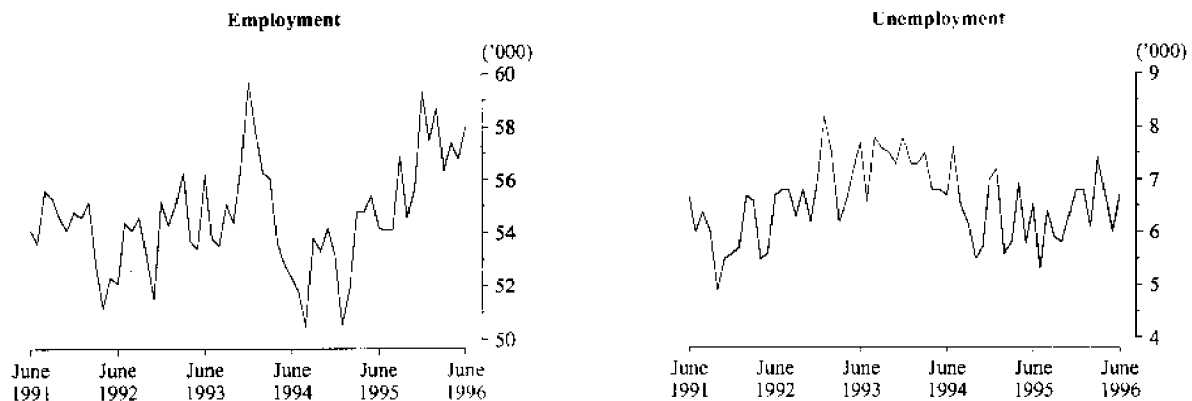
## LABOUR FORCE STATUS, FEMALES<sup>1,2</sup>: Original

Month		Total employed ( <sup>'000</sup> )	Total unemployed ( <sup>'000</sup> )	Unemployment rate %	Participation rate %
<b>HOBART AND SOUTHERN STATISTICAL DIVISIONS</b>					
1993	June	41.2	5.6	11.9	51.7
1995	June	45.1	2.7	5.6	51.6
1996	April	44.3	3.5	7.3	50.9
	May	43.7	3.7	7.9	51.0
	June	43.3	4.1	8.6	51.3
<b>NORTHERN STATISTICAL DIVISION</b>					
1993	June	24.2	2.5	9.5	49.6
1995	June	22.3	2.2	9.2	46.7
1996	April	25.2	2.1	7.8	53.0
	May	24.5	2.2	8.1	51.8
	June	24.8	2.4	8.9	52.2
<b>MERSEY-LYELL STATISTICAL DIVISION</b>					
1993	June	16.8	2.5	12.9	49.4
1995	June	18.2	1.8	9.1	48.3
1996	April	17.2	2.1	10.7	46.00
	May	17.8	2.3	11.5	46.91
	June	17.7	2.1	10.4	46.26
<b>TASMANIA</b>					
1993	June	82.3	10.6	11.4	50.6
1995	June	85.6	6.7	7.3	49.5
1996	April	86.7	7.7	8.1	50.4
	May	86.0	8.2	8.7	50.3
	June	85.8	8.5	9.1	50.4

1 For explanation of terms and concepts, refer to *Labour Force, Australia*, ABS catalogue number 6203.0.

2 Data in this table are original series, i.e. they are not part of a seasonally adjusted or a trend series. Accordingly, care should be exercised when using these data. New monthly data from each quarter (March, June, September and December) are published two months after the quarter. (Source: Labour Force Estimates—microfiche tables.)

### Northern Statistical Division—Persons: Original





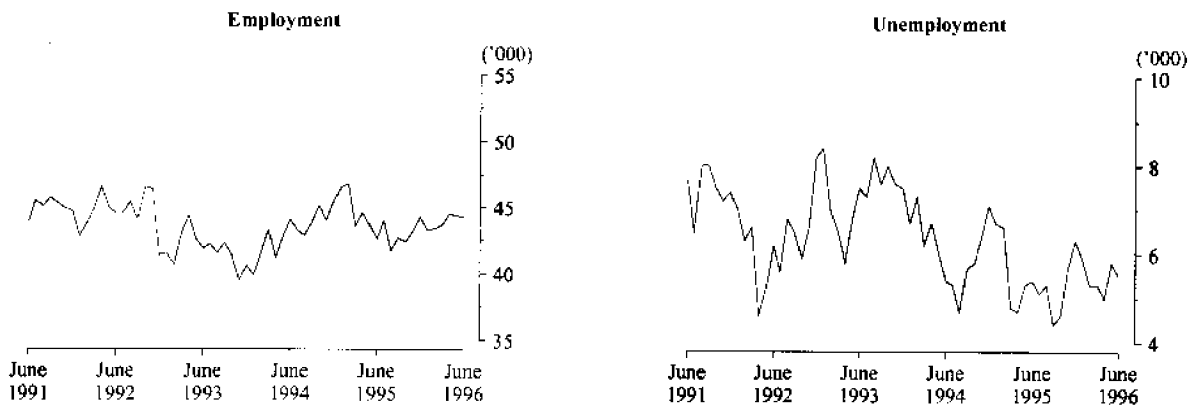
## 6

LABOUR FORCE STATUS, PERSONS<sup>1, 2</sup>; **Original**

Month		Total employed ( <sup>'000</sup> )	Total unemployed ( <sup>'000</sup> )	Unemployment rate %	Participation rate %
<b>HOBART AND SOUTHERN STATISTICAL DIVISIONS</b>					
1993	June	93.0	13.3	12.5	59.6
1995	June	101.7	9.3	8.3	61.2
1996	April	100.9	10.1	9.1	60.6
	May	99.7	10.4	9.4	60.3
	June	98.9	11.5	10.4	60.9
<b>NORTHERN STATISTICAL DIVISION</b>					
1993	June	56.2	7.7	12.0	61.2
1995	June	54.2	6.5	10.7	60.2
1996	April	57.4	6.7	10.5	63.2
	May	56.8	6.0	9.6	61.9
	June	58.0	6.7	10.3	63.0
<b>MERSEY-LYELL STATISTICAL DIVISION</b>					
1993	June	41.9	7.5	15.2	62.3
1995	June	42.6	5.4	11.3	57.8
1996	April	44.5	5.0	10.1	59.1
	May	44.4	5.8	11.5	59.5
	June	44.3	5.5	11.1	58.9
<b>TASMANIA</b>					
1993	June	191.1	28.5	13.0	60.7
1995	June	198.4	21.1	9.6	59.8
1996	April	202.7	21.9	9.7	61.0
	May	200.9	22.2	10.0	60.6
	June	201.2	23.7	10.5	61.1

1 For explanation of terms and concepts, refer to *Labour Force, Australia*, ABS catalogue number 6203.0.

2 Data in this table are original series, i.e. they are not part of a seasonally adjusted or a trend series. Accordingly, care should be exercised when using these data. New monthly data from each quarter (March, June, September and December) are published two months after the quarter. (Source: Labour Force Estimates—microfiche tables.)

Mersey-Lyell Statistical Division—Persons: **Original**

## 7

TEENAGE LABOUR MARKET<sup>1,2</sup>; Original

Month	Employed		Unemployed		Labour force	Not in labour force	Civilian population aged 15-19	Unemployment rate	Unemployment population ratio	Participation rate	
	Full-time	Total	Looking for full-time work	Total							
	'000	'000	'000	'000							
ATTENDING NEITHER SCHOOL NOR A TERTIARY INSTITUTION FULL TIME											
1993	July	7.0	9.4	2.9	2.9	12.3	1.8	14.1	23.6	20.6	87.2
1995	July	6.0	8.8	2.4	2.4	11.2	1.1	12.3	21.3	19.5	90.9
1996	May	7.0	9.3	2.50	2.7	12.0	1.0	13.0	22.4	20.8	92.2
	June	7.0	9.3	2.7	2.7	12.0	1.3	13.3	22.7	20.3	90.6
	July	6.6	8.7	3.00	3.0	11.6	1.5	13.1	25.7	22.9	88.9
ATTENDING SCHOOL OR A TERTIARY INSTITUTION FULL TIME											
1993	July	0.2	4.3	0.6	1.4	5.7	14.7	20.5	24.6	6.8	27.8
1995	July	0.3	6.1	0.3	1.2	7.3	14.4	21.7	16.4	5.5	33.6
1996	May	0.2	6.6	0.4	1.1	7.7	13.3	21.0	14.3	5.2	36.7
	June	0.3	6.9	0.2	1.2	8.1	12.6	20.8	14.8	5.8	38.9
	July	0.1	6.5	..	1.3	7.8	13.2	21.0	16.7	6.2	37.1
TOTAL											
1993	July	7.2	13.7	3.6	4.3	18.1	16.5	34.6	24.0	12.4	52.2
1995	July	6.2	14.9	2.7	3.6	18.4	15.5	34.0	19.4	10.6	54.3
1996	May	7.1	15.9	2.9	3.8	19.7	14.3	34.1	19.4	11.1	57.9
	June	7.3	16.2	2.9	4.0	20.2	13.9	34.1	19.6	11.7	59.2
	July	6.7	15.2	3.0	4.3	19.5	14.6	34.1	22.0	12.6	57.1

<sup>1</sup> Persons aged 15-19 years.

<sup>2</sup> For explanation of terms and concepts, refer to Labour Force, Australia, ABS catalogue number 6203.0.  
(Source: Labour Force Estimates—unpublished data.)

ALL EMPLOYED PERSONS, OCCUPATION<sup>1</sup>: Original

Occupation	May 1995		May 1996		Proportion of total employed	
	Persons		Males	Females	Persons	
	'000		'000	'000	'000	%
<b>Managers and administrators</b>	19.0		13.6	3.4	17.0	9.4
Farmers and farm managers	6.5		4.0	0.9	4.9	3.2
Managing supervisors	6.9		6.5	1.5	8.0	3.4
Other	5.6		3.1	1.2	4.1	2.8
<b>Professionals</b>	25.1		12.8	10.7	23.5	12.5
Building and professional engineers	2.4		1.6	—	1.6	1.2
Health diagnosis and treatment practitioners	3.0		1.3	1.5	2.8	1.5
School teachers	8.5		1.4	3.7	5.1	4.2
Business professionals	3.7		3.8	1.4	5.2	1.9
Other	7.4		4.7	4.1	8.8	3.7
<b>Para-professionals</b>	14.3		7.3	5.8	13.1	7.1
Engineering and building associates and technicians	1.6		1.7	0.1	1.8	0.8
Registered nurses	5.7		0.4	4.0	4.5	2.8
Other	7.0		5.2	1.7	6.8	3.5
<b>Tradespersons</b>	29.1		26.3	3.4	29.7	14.4
Metal fitting and machining tradespersons	2.8		2.4	—	2.4	1.4
Electrical and electronics tradespersons	4.0		4.5	0.1	4.6	2.0
Building tradespersons	6.4		6.9	0.1	7.0	3.2
Other	15.9		12.4	3.2	15.7	7.9
<b>Clerks</b>	33.0		8.8	26.1	34.9	16.4
Stenographers and typists	3.8		0.1	3.3	3.4	1.9
Receptionists, telephonists and messengers	5.0		1.2	4.6	5.7	2.5
Other	24.2		7.5	18.2	25.8	12.0
<b>Salespersons and personal service workers</b>	34.2		9.7	23.0	32.7	17.0
Sales representatives	2.9		2.0	1.3	3.3	1.4
Sales assistants	15.3		4.0	10.5	14.5	7.6
Other	16.0		3.7	11.2	14.9	7.9
<b>Plant and machine operators, and drivers</b>	16.2		15.1	2.1	17.2	8.0
Road and rail transport drivers	6.9		6.1	0.6	6.6	3.4
Machine operators	4.4		3.3	1.5	4.8	2.2
Other	4.9		5.7	—	5.8	2.4
<b>Labourers and related workers</b>	30.6		21.2	11.6	32.8	15.2
Trades assistants and factory hands	5.4		3.7	1.4	5.1	2.7
Agricultural labourers and related workers	7.0		5.8	2.2	8.1	3.5
Cleaners	6.4		1.3	4.6	5.9	3.2
Construction and mining labourers	2.0		2.9	0.1	3.0	1.0
Other	9.8		7.5	3.3	10.7	4.9
<b>Total employed</b>	<b>201.4</b>		<b>115.0</b>	<b>86.0</b>	<b>200.9</b>	<b>100.0</b>
					<b>100.0</b>	<b>100.0</b>

<sup>1</sup> For explanation of terms and concepts, refer to *Labour Force, Australia*, ABS catalogue number 6203.0. (Source: Labour Force Estimates—unpublished data.)

## 9

EMPLOYED WAGE AND SALARY EARNERS, SECTOR AND INDUSTRY<sup>1</sup>: Original

Industry	Employees, February 1995					Percentage distribution	
	Private	Public	Private and public			February 1993	February 1995
	No. ('000)	No. ('000)	Males	Females	Persons		
Agriculture, forestry, fishing and hunting	n.a.	0.7	n.a.	n.a.	n.a.	n.a.	n.a.
Mining	1.5	—	1.4	0.1	1.5	1.7	1.1
Manufacturing	20.3	0.1	15.4	4.9	20.4	14.8	15.2
Electricity, gas and water, construction	6.0	2.7	7.6	1.0	8.7	6.8	6.5
Wholesale and retail trade	26.0	—	15.0	11.0	26.1	20.8	19.4
Transport and storage	3.6	1.5	4.1	1.1	5.2	4.1	3.9
Communication	—	2.3	1.8	0.6	2.3	1.6	1.7
Finance, property and business services	10.1	0.9	4.9	6.0	10.9	9.3	8.1
Public administration and defence	—	10.5	6.5	4.0	10.5	7.0	7.8
Community services	14.0	23.4	11.9	25.5	37.4	24.9	27.8
Recreation, personal and other services	10.2	0.6	4.1	6.7	10.8	8.4	8.0
<b>Total all industries</b>	<b>91.8</b>	<b>42.6</b>	<b>73.2</b>	<b>61.2</b>	<b>134.4</b>	<b>100.0</b>	<b>100.0</b>

<sup>1</sup> For explanation of terms and concepts, refer to *Employed Wage and Salary Earners, Australia*, catalogue number 6248.0. (Source: *Employed Wage and Salary Earners*, ABS catalogue number 6248.0.)

## 10

## AVERAGE HOURS WORKED: Original

Month	Average weekly total hours worked, all employed persons <sup>1</sup>			Average weekly overtime hours <sup>2</sup>		Percentage of employees working overtime <sup>2</sup>
	Males	Females	Persons	Per employee	Per employee working overtime	
<b>1993</b>						
May	39.0	28.1	34.4	1.1	7.3	15.2
<b>1995</b>						
May	39.6	27.8	34.5	0.9	5.9	14.5
August	40.9	29.6	36.0	0.8	5.7	14.4
November	39.7	26.5	33.9	0.9	6.4	14.7
<b>1996</b>						
February	37.7	25.6	32.7	0.9	6.5	14.1
May	40.1	27.0	34.5	0.9	5.6	16.0

<sup>1</sup> For explanation of terms and concepts, refer to *Labour Force, Australia*, ABS catalogue number 6203.0.

<sup>2</sup> For explanation of terms and concepts, refer to *Job Vacancies and Overtime, Australia*, ABS catalogue number 6354.0.

# 11

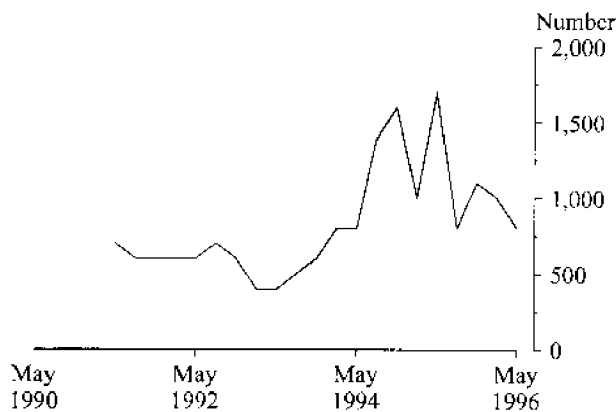
## JOB VACANCIES<sup>1</sup>: Original

Period	Number	Rate <sup>2</sup> %
<b>1993</b>		
May	400	0.3
<b>1995</b>		
May	1 700	1.1
August	800	0.6
November	1 100	0.7
<b>1996</b>		
February	1 000	0.6
May	800	0.5

<sup>1</sup> For explanation of terms and concepts refer to *Job Vacancies and Overtime, Australia*, catalogue number 6354.0.

<sup>2</sup> Job vacancies are expressed as a percentage of the number of job vacancies divided by the number of employees plus job vacancies.

### JOB VACANCIES: Original



# 12

## INDUSTRIAL DISPUTES<sup>1</sup>: Original

Month	Working days lost	Twelve months ending	Working days lost per thousand employees
<b>1995</b>			
May	200	May	31
June	700	June	35
July	800	July	38
August	100	August	33
September	100	September	30
October	0	October	30
November	100	November	30
December	200	December	22
<b>1996</b>			
January	800	January	24
February	100	February	23
March	0	March	20
April	100	April	20
May	200	May	19

### Twelve months ended 1996

May 3 200

<sup>1</sup> For explanation of terms and concepts, refer to *Industrial Disputes, Australia*, ABS catalogue number 6321.0.

# 13

## AVERAGE WEEKLY EARNINGS OF EMPLOYEES<sup>1</sup>: Original and trend

Quarter	Survey reference period	Full-time adult males		All males	Full-time adult females		All females	Full-time adult persons		All employees
		Weekly ordinary time earnings	Weekly total earnings	Weekly total earnings	Weekly ordinary time earnings	Weekly total earnings	Weekly total earnings	Weekly ordinary time earnings	Weekly total earnings	Weekly total earnings
		\$	\$	\$	\$	\$	\$	\$	\$	\$
<b>ORIGINAL</b>										
<b>1995</b>										
June	19 May	635.70	678.60	608.80	546.50	556.90	385.60	606.40	638.60	500.70
September	18 August	634.60	675.50	598.70	544.50	555.10	384.80	604.20	634.80	495.60
December	17 November	647.90	687.90	615.50	556.10	569.00	403.20	617.30	648.20	513.80
<b>1996</b>										
March	16 February	652.70	691.40	617.80	561.10	569.30	391.80	622.90	651.70	510.00
June	17 May	663.40	702.80	621.90	570.10	583.20	389.30	631.90	662.40	503.30
<b>TREND</b>										
<b>1995</b>										
June	19 May	633.50	675.20	604.20	546.30	557.80	390.10	604.80	636.60	501.00
September	18 August	637.90	679.80	609.10	548.90	559.80	392.00	608.60	640.30	504.90
December	17 November	645.10	685.20	612.00	553.70	564.50	392.70	614.20	645.10	506.70
<b>1996</b>										
March	16 February	653.60	691.70	614.30	560.50	571.30	392.00	622.30	651.40	506.20
June	17 May	663.70	701.10	618.10	568.50	580.30	391.50	631.50	659.50	504.70

<sup>1</sup> For explanation of terms and concepts, refer to *Average Weekly Earnings, States and Australia* (Catalogue No. 6302.0). (Source: *Average Weekly Earnings, States and Australia*, ABS catalogue number 6302.0.)

# 14

## WEEKLY AWARD RATES OF PAY INDEXES, FULL-TIME ADULT EMPLOYEES<sup>1</sup>: Original

(Base: June 1985 = 100.0)

Industry	1993	1995	1996		
	June	June	April	May	June
Mining	137.7	137.7	137.7	137.7	137.7
Manufacturing	145.0	148.6	150.2	151.8	151.8
Electricity, gas and water	130.9	136.3	136.4	136.6	136.6
Construction	141.3	143.8	144.8	144.8	144.8
Wholesale trade	137.6	140.8	143.3	143.3	143.3
Retail trade	136.5	139.8	142.7	142.7	142.8
Transport and storage	137.9	139.6	143.1	143.3	143.3
Communication	135.4	135.4	135.4	135.4	135.4
Finance, property and business services	137.4	137.8	139.6	139.6	139.6
Public administration and defence	135.2	152.2	155.1	155.1	155.1
Community services	140.3	144.6	145.2	145.2	145.2
Recreation, personal and other services	146.0	151.1	153.8	153.8	153.8
<b>Total all industries</b>	<b>139.2</b>	<b>143.8</b>	<b>145.3</b>	<b>145.6</b>	<b>145.6</b>

<sup>1</sup> For explanation of terms and concepts, refer to *Award Rates of Pay Indexes, Australia*, ABS catalogue number 6312.0. (Source: *Award Rates of Pay Indexes, Australia*, ABS catalogue number 6312.0.)

## 15

SUMMARY OF ANNUAL MOVEMENTS IN WAGES AND PRICES: **Original**

Period	CPI. All groups Hobart	Price index of materials used in house building. All groups, Hobart	Price index of materials used in building other than house building. All groups, Hobart	Average weekly total, earnings, full-time adult employees	Weekly award rates of pay index, full-time adult employees
PERCENTAGE CHANGE FROM PREVIOUS YEAR					
<b>1993</b>					
June	2.2	1.0	1.4	..	0.4
<b>1995</b>					
June	4.2	4.4	3.3	..	1.2
<b>1995</b>					
October	..	3.6	3.7	..	1.6
November	..	3.8	3.2	1.8	1.6
December	4.4	3.4	3.0	..	1.8
<b>1996</b>					
January	..	3.2	2.9	..	1.4
February	..	2.2	2.4	3.2	1.4
March	3.4	1.6	2.0	..	1.2
April	..	1.7	1.4	..	1.2
May	..	0.6	1.2	3.7	1.1
June	3.0	0.7	1.0	..	1.3

(Sources:  
 Consumer Price Index, ABS catalogue number 6401.0,  
 Price Index of Materials Used in House Building, ABS catalogue number 6408.0,  
 Price Index of Materials Used in Other than House Building, ABS catalogue number 6407.0,  
 Average Weekly Earnings, States and Australia, ABS catalogue number 6302.0,  
 Award Rates of Pay Indexes, Australia, ABS catalogue number 6312.0.)

## 16

HOUSE PRICE INDEX NUMBERS<sup>1</sup>, HOBART: **Original**

(Base of each Index: 1989-90 = 100.0)

	Established house price index		Project home price index	
	Index	% change <sup>2</sup>	Index	% change <sup>2</sup>
1992-93	116.6	4.1	114.1	3.6
1993-94	122.5	5.1	117.7	3.2
1994-95	129.0	5.3	121.3	3.1
<b>1994</b>				
March	123.0	1.3	117.8	0.8
June	126.0	2.4	119.4	1.4
September	128.2	1.7	120.1	0.6
December	128.2	0.0	120.5	0.3
<b>1995</b>				
March	129.4	0.9	121.6	0.9
June	130.1	0.5	123.1	1.2
September	129.2	- 0.7	123.5	0.3
December	129.1	- 0.1	123.5	0.0
<b>1996</b>				
March	129.8	+ 0.5	123.3	- 0.2

<sup>1</sup> Used in calculating the mortgage interest charges component of the Consumer Price Index.

<sup>2</sup> Percentage change over previous period.

(Source: House Price Indexes: Eight Capital Cities, ABS catalogue number 6416.0)

CONSUMER PRICE INDEX, HOBART AND EIGHT CAPITAL CITIES COMBINED<sup>1, 2</sup>: **Original**  
(Base of each index: year 1989-90 = 100.0)

Period	Hobart					
	Food	Clothing	Housing <sup>3</sup>	Household equipment and operation	Transportation	Tobacco and alcohol
<b>1993</b>						
December	111.7	106.8	93.4	111.8	112.3	133.4
<b>1994</b>						
March	112.6	106.4	93.3	112.2	111.9	134.3
June	112.2	106.4	94.2	112.4	112.8	134.8
September	113.9	106.6	94.8	112.8	113.9	137.2
December	113.3	105.3	97.6	113.9	115.0	139.1
<b>1995</b>						
March	115.4	105.0	102.7	114.9	115.1	140.3
June	116.1	106.1	104.5	115.4	117.2	143.1
September	117.3	105.9	106.0	116.5	119.4	144.3
December	117.1	105.6	106.5	117.5	120.1	145.9
<b>1996</b>						
March	118.1	106.3	107.2	117.8	119.0	150.3
June	118.4	106.0	107.6	118.5	119.8	153.3

Period	Hobart				Weighted average of eight capital cities	
	Health and personal care	Recreation and education	Index, all groups	% change over previous period, all groups	Index	% change over previous period
<b>1993</b>						
December	134.5	111.0	111.6	+ 0.5	110.0	+ 0.2
<b>1994</b>						
March	137.5	109.7	111.9	+ 0.3	110.4	+ 0.4
June	137.9	111.3	112.4	+ 0.4	111.2	+ 0.7
September	138.7	111.7	113.3	+ 0.8	111.9	+ 0.6
December	138.7	113.0	114.2	+ 0.8	112.8	+ 0.8
<b>1995</b>						
March	140.4	115.4	116.1	+ 1.7	114.7	+ 1.7
June	141.0	114.0	117.1	+ 0.9	116.2	+ 1.3
September	146.7	113.3	118.4	+ 1.1	117.6	+ 1.2
December	146.9	115.8	119.2	+ 0.7	118.5	+ 0.8
<b>1996</b>						
March	149.7	117.1	120.1	+ 0.8	119.0	+ 0.4
June	150.5	116.0	120.6	+ 0.4	119.8	+ 0.7

<sup>1</sup> Further information on construction of CPI indexes is contained in the bulletin *The Australian Consumer Price Index Concepts, Sources and Methods* (Catalogue No. 6461.0).

<sup>2</sup> The CPI is now published on a reference base of 1989-90 = 100.0.  
(Source: *Consumer Price Index*, ABS catalogue number 6401.0.)



PRICE INDEX OF MATERIALS USED IN BUILDING OTHER THAN HOUSE BUILDING, HOBART: **Original**  
(Base year: 1989-90 = 100.0)

<i>Index numbers for selected major building materials</i>						
<i>Period</i>	<i>Structural timber</i>	<i>Clay bricks</i>	<i>Ready mixed concrete</i>	<i>Precast concrete products</i>	<i>Steel decking, cladding etc.</i>	<i>Structural steel</i>
<b>1995</b>						
April	125.8	118.0	117.0	122.5	107.1	116.0
May	125.8	118.0	118.3	122.5	107.5	117.0
June	125.8	118.1	118.0	122.5	107.5	119.6
July	124.9	118.1	117.1	130.3	110.7	119.6
August	122.0	118.1	117.0	130.3	110.7	119.6
September	122.1	123.2	116.7	130.3	111.0	119.6
October	119.7	123.2	117.2	130.3	111.0	120.9
November	120.1	123.2	116.3	130.3	111.0	120.9
December	120.1	123.3	114.5	130.4	111.0	121.9
<b>1996</b>						
January	120.1	123.3	116.9	130.4	111.0	121.9
February	116.9	123.3	115.9	128.4	112.1	121.9
March	116.9	123.7	113.2	128.4	112.3	121.9
April p	116.9	123.7	113.2	128.4	112.3	122.7
May p	114.4	123.7	112.9	128.4	112.3	122.7
June p	113.8	124.5	112.1	128.4	112.3	123.7

<i>Index numbers for selected major building materials</i>							
<i>Period</i>	<i>Reinforcing steel bar, fabric and mesh</i>	<i>Aluminium windows</i>	<i>Fabricated steel products</i>	<i>Builders' hardware</i>	<i>Sand &amp; aggregate</i>	<i>Paint &amp; other coatings</i>	<i>Non-ferrous pipes &amp; fittings</i>
<b>1995</b>							
April	105.9	104.5	107.6	114.6	133.1	114.7	183.2
May	105.9	104.5	107.6	114.6	133.1	115.5	186.0
June	105.7	104.5	107.6	118.1	133.1	114.9	183.3
July	107.0	104.5	107.6	118.9	133.1	116.3	184.9
August	107.4	104.5	107.7	118.9	133.1	119.5	184.4
September	109.2	104.5	107.6	120.4	133.1	118.9	169.0
October	109.2	104.5	108.3	120.7	133.1	118.9	169.1
November	109.2	104.5	108.3	119.2	133.1	118.7	169.1
December	109.2	104.5	108.3	117.7	133.1	121.4	169.1
<b>1996</b>							
January	109.2	104.5	108.3	118.3	133.1	121.5	169.1
February	109.2	104.5	108.1	117.7	133.1	121.5	169.4
March	109.2	104.7	108.3	117.7	133.1	121.5	169.4
April p	109.2	104.4	111.5	117.3	133.1	118.1	172.8
May p	109.2	104.4	111.5	116.0	133.1	120.6	174.5
June p	109.2	104.4	111.9	116.1	133.1	124.5	174.5

(Source: Price Index of Materials Used in Other than House Building, ABS catalogue number 6407.0.)

continued

PRICE INDEX OF MATERIALS USED IN BUILDING OTHER THAN HOUSE BUILDING, HOBART: **Original**—continued  
 (Base year: 1989–90 = 100.0)

Period	All electrical materials		All mechanical services		All plumbing materials	
	Index	% change over previous period	Index	% change over previous period	Index	% change over previous period
<b>1995</b>						
April	114.7	+ 1.4	114.4	+ 0.7	128.4	+ 0.1
May	115.2	+ 0.4	113.9	- 0.4	128.9	+ 0.4
June	116.7	+ 1.3	114.0	+ 0.1	129.4	+ 0.4
July	117.9	+ 1.0	114.1	+ 0.1	129.7	+ 0.2
August	118.9	+ 0.8	114.0	- 0.1	129.9	+ 0.2
September	118.9	0.0	113.3	- 0.6	126.6	- 2.5
October	118.7	- 0.2	115.2	+ 1.7	127.4	+ 0.6
November	118.7	0.0	114.7	- 0.4	127.4	0.0
December	118.5	- 0.2	114.8	+ 0.1	127.5	+ 0.1
<b>1996</b>						
January	117.8	- 0.6	114.8	0.0	127.5	0.0
February	117.8	0.0	115.4	+ 0.5	127.6	+ 0.1
March	118.6	+ 0.7	115.7	- 0.3	127.6	0.0
April p	118.3	- 0.3	116.1	+ 0.3	126.6	- 0.8
May p	119.6	+ 1.1	116.1	0.0	127.1	+ 0.4
June p	119.5	- 0.1	116.5	+ 0.3	127.3	+ 0.2
<b>All groups excluding electrical materials and mechanical services</b>						
Period			All groups			
	Index	% change over previous period	Index	% change over previous period		
<b>1995</b>						
April	113.6	+ 0.5	113.5	+ 0.6		
May	114.1	+ 0.4	113.8	+ 0.3		
June	114.6	+ 0.4	114.2	+ 0.4		
July	115.1	+ 0.4	114.7	+ 0.4		
August	115.3	+ 0.2	114.9	+ 0.2		
September	115.5	+ 0.2	114.9	0.0		
October	115.8	+ 0.3	115.5	+ 0.5		
November	115.7	- 0.1	115.3	- 0.2		
December	115.5	- 0.2	115.1	- 0.2		
<b>1996</b>						
January	115.9	+ 0.3	115.3	+ 0.2		
February	115.6	0.3	115.2	- 0.1		
March	115.3	- 0.3	115.1	- 0.1		
April p	115.2	- 0.1	115.1	0.0		
May p	115.3	+ 0.1	115.2	+ 0.1		
June p	115.3	0.0	115.3	+ 0.1		

(Source: Price Index of Materials Used in Other than House Building, ABS catalogue number 6407.0.)

## 19

MISCELLANEOUS INDICATORS OF PRODUCTION: **Original**

Year or month	Dairy products <sup>1</sup>			Staff-hours worked <sup>2</sup>	
	Whole milk <sup>4</sup>	Factory butter <sup>5</sup>	Factory cheese	Textile manufacturing <sup>6</sup>	Vegetable preserving
	million litres	tonnes	tonnes	'000	'000
1992-93	412.9	6 287	20 043	1 740	1 915
1993-94	447.3	7 846	22 461	1 575	2 002
1994-95	436.5	8 105	20 529	1 527	1 838
<b>1993</b>					
May	23.2	r 428	r 1 254	161	201
<b>1995</b>					
May	18.7	r 519	r 680	147	165
<b>1996</b>					
March	45.7	936	1 783	122	178
April	36.9	873	1 472	106	182
May	31.0	564	1 577	131	185
Year or month	Newsprint <sup>7</sup>	Refined zinc	Metal, refin. index <sup>3</sup>	Electricity	Gas
	'000 tonnes	'000 tonnes		million kW.h	'000 MJ
1992-93	228.4	212.0	109.4	8 864	61 432
1993-94	208.9	193.8	105.5	8 855	55 767
1994-95	222.7	189.8	98.3	8 688	51 933
<b>1993</b>					
May	16.9	18.1	100.2	766	5 965
<b>1995</b>					
May	20.6	16.8	102.3	767	4 479
<b>1996</b>					
March	20.8	17.6	102.6	724	2 425
April	19.5	17.9	106.3	751	3 087
May	20.6	18.2	114.8	833	3 840

<sup>1</sup> Source: Australian Dairy Corporation.

<sup>2</sup> Changing productivity per staff-hour makes these indicators unsatisfactory for long-term comparisons.

<sup>3</sup> *Metallurgical refining index* (Base: 1979-80 = 100.0) Output from selected establishments covering the smelting and refining of ferro-alloys, zinc and aluminium. The weighting pattern is based on the establishments' value added as derived from the 1979-80 Manufacturing Census. For multi-product establishments, value added was apportioned to products on the basis of gross receipts from each product.

<sup>4</sup> Includes the whole milk equivalent of farm cream intake.

<sup>5</sup> Includes butter equivalent of butter oil.

<sup>6</sup> Includes spinning, weaving and carpet making. Reported by establishments which manufacture textiles only, or manufacture clothing and textiles in the one plant.

<sup>7</sup> Excludes production of directory newsprint and high grade specialty paper.

(Source: ABS unpublished data.)

## 20

LIVESTOCK SLAUGHTERING: **Original**

Year or month	Cattle					
	Bulls, bullocks and steers	Cows and heifers	Calves	Sheep	Lambs	Pigs
	'000	'000	'000	'000	'000	'000
1992-93	99.0	90.4	32.7	473.4	456.5	92.5
1993-94	101.8	85.2	23.2	526.1	437.8	95.8
1994-95	111.0	96.9	29.2	569.3	477.2	92.9
<b>1994</b>						
June	8.8	7.5	0.4	55.3	52.6	9.9
<b>1995</b>						
June	10.5	10.3	0.9	42.8	44.8	8.6
July	p 8.1	5.8	1.1	18.6	25.6	6.5
August	p 5.0	4.8	14.0	18.2	27.3	7.3
September	p 5.6	4.4	16.6	18.0	29.0	7.1
October	p 7.0	6.3	5.3	25.5	28.6	6.1
November	p 8.8	7.1	0.8	36.5	34.9	6.9
December	p 9.5	7.6	0.5	44.8	40.5	8.4
<b>1996</b>						
January	p 11.2	6.8	0.1	43.6	38.9	6.1
February	p 8.6	7.8	0.1	39.8	40.4	6.3
March	p 9.0	8.9	0.2	40.6	41.2	7.2
April	p 6.6	6.4	0.9	31.4	30.7	6.0
May	p 10.8	10.7	1.4	42.5	39.7	7.3
June	p 9.1	9.0	0.7	30.6	33.1	6.6

(Source: *Livestock Products, Australia*, ABS catalogue number 7215.0.)

## 21

LIVESTOCK SLAUGHTERING: **Seasonally adjusted and trend**

Month	Seasonally adjusted			Trend		
	Cattle and calves	Sheep and lambs	Pigs	Cattle and calves	Sheep and lambs	Pigs
	no.	no.	no.	no.	no.	no.
<b>1994</b>						
June	17 284	100 403	8 486	16 554	92 058	7 918
<b>1995</b>						
June	24 231	79 542	7 402	21 066	73 182	7 555
July	17 108	61 018	6 891	20 129	70 083	7 345
August	18 875	68 669	7 418	19 602	68 228	7 149
September	19 047	68 094	7 287	19 652	68 207	7 006
October	19 681	71 035	6 803	20 164	69 607	6 922
November	20 691	69 299	6 524	20 504	70 904	6 896
December	24 723	77 577	6 761	20 391	71 171	6 910
<b>1996</b>						
January	18 563	72 699	7 354	19 852	69 893	6 913
February	18 684	65 606	6 862	19 196	67 631	6 885
March	17 537	63 666	7 006	18 891	65 450	6 801
April	15 710	54 941	6 437	19 043	63 864	6 660
May	23 016	72 187	6 607	19 524	62 932	6 502
June	21 725	62 228	6 067	20 084	62 162	6 331

(Source: ABS unpublished data.)

## 22

MEAT PRODUCTION<sup>1</sup>: Original

Year or month	Beef tonnes	Veal tonnes	Mutton tonnes	Lamb tonnes	Pigmeat <sup>2</sup> tonnes	Total tonnes
1992-93	44 925	692	8 949	7 456	5 749	67 770
1993-94	47 458	515	9 992	7 047	6 019	71 031
1994-95	49 827	1 059	11 230	8 412	5 982	76 511
<b>1994</b>						
June	3 962	10	1 030	864	728	6 594
<b>1995</b>						
June	4 864	38	877	829	553	7 161
July p	3 569	30	389	481	426	4 895
August p	2 312	353	378	514	475	4 031
September p	2 354	418	372	546	470	4 161
October p	3 151	141	529	540	399	4 761
November p	3 846	24	797	659	449	5 775
December p	4 145	17	983	764	546	6 456
<b>1996</b>						
January p	4 467	4	937	733	397	6 538
February p	4 122	5	852	761	410	6 150
March p	4 175	9	860	777	470	6 290
April p	3 012	26	657	579	397	4 671
May p	5 230	42	892	749	476	7 389
June p	4 429	21	638	624	430	6 143

<sup>1</sup> Carcass weight.<sup>2</sup> Includes pork used for production of bacon and ham.(Source: *Livestock Products, Australia*, ABS catalogue number 7215.0.)

## 23

## PRINCIPAL MINERAL CONCENTRATES PRODUCED: Original

Year or quarter	Copper	Iron (pellets)	Iron pyrite	Lead	Lead- copper	Lead- zinc	Tin	Zinc
Year or quarter	'000 tonnes	'000 tonnes	'000 tonnes	'000 tonnes	'000 tonnes	'000 tonnes	'000 tonnes	'000 tonnes
1992-93	107.6	1 458.9	94.5	90.7	1.2	69.5	12.1	454.3
1993-94	128.1	1 565.9	87.9	93.4	0.0	57.5	13.4	316.5
1994-95	59.4	1 483.8	22.9	97.4	0.0	45.3	14.3	350.6
<b>1994</b>								
December	23.3	369.9	0.0	23.9	0.0	8.9	3.7	83.7
<b>1995</b>								
March	3.4	301.3	0.0	18.4	0.0	9.6	3.2	90.5
June	3.9	415.8	0.0	26.5	0.0	15.8	4.2	86.2
September	4.5	463.0	0.0	21.9	0.0	11.2	4.1	93.6
December	4.4	416.0	0.0	29.7	0.0	6.8	4.1	98.1
<b>1996</b>								
March	3.3	326.9	0.0	24.1	0.0	11.4	3.4	84.8

(Source: Tasmania—Development and Resources)

## 24

SAWMILLS AND PLYWOOD MILLS, LOGS DELIVERED AND TIMBER PRODUCED: **Original**

Year or quarter	Tasmanian-grown logs delivered					Sawn, peeled and sliced timber produced <sup>1</sup>				
	Eucalypts	Hardwoods, excluding eucalypts <sup>2</sup>	Plantation <sup>3</sup> softwoods	Native softwoods <sup>4</sup>	Total	Eucalypts	Hardwoods, excluding eucalypts <sup>2</sup>	Plantation <sup>3</sup> softwoods	Native softwoods <sup>4</sup>	Total
1992-93	554.5	13.0	312.8	2.8	883.2	188.9	2.9	131.6	0.7	324.1
1993-94	584.3	15.3	299.2	1.5	900.4	203.5	3.1	141.0	0.5	348.0
1994-95	653.1	12.6	304.9	2.8	973.4	212.5	4.3	142.7	0.6	360.1
<b>1994</b>										
March	140.0	5.0	77.4	0.4	222.8	46.5	0.6	38.1	0.1	85.3
June	149.4	4.5	76.1	0.4	230.4	52.1	1.1	34.1	0.2	87.5
September	170.2	3.8	76.3	0.6	250.9	59.5	1.2	35.1	0.1	95.9
December	163.0	3.7	68.8	0.3	235.8	55.2	1.0	36.1	0.2	92.5
<b>1995</b>										
March	132.3	3.0	82.5	1.1	218.9	44.5	1.0	37.0	0.1	82.6
June	187.6	2.1	77.4	0.7	267.8	53.4	1.1	34.6	0.1	89.2
September	182.6	1.7	79.6	0.2	264.2	54.4	1.3	35.8	0.1	91.6
December	137.8	1.4	69.9	0.2	209.4	48.1	1.0	35.8	0.2	85.2
<b>1996</b>										
March	135.4	6.4	97.7	0.3	239.8	40.7	0.9	40.9	0.1	82.7

<sup>1</sup> Includes plywood, veneer and sliced timber production converted to an equivalent cubic measurement.  
<sup>2</sup> Includes blackwood, myrtle, sassafras etc.  
<sup>3</sup> Radiata pine.  
<sup>4</sup> Includes Huon pine, celery top pine and King William pine.  
(Source: ABS unpublished data.)

## 25

CHIPPING AND GRINDING OF WOOD<sup>1</sup>: **Original**

Year or quarter	Producing locations <sup>2</sup>	Materials used <sup>3</sup>		
		Logs delivered <sup>4</sup>	Sawmill offcuts	Chipped and ground wood production
	no.	'000 m <sup>3</sup>	'000 m <sup>3</sup>	('000 tonnes green weight)
1992-93	31	3 350.6	295.8	3 565.8
1993-94	30	3 448.8	339.8	3 726.1
1994-95	31	4 064.1	394.2	4 343.1
<b>1994</b>				
March	31	818.3	71.3	868.3
June	30	841.6	83.3	944.0
September	30	939.8	86.3	991.3
December	31	1 065.8	92.0	1 115.4
<b>1995</b>				
March	31	1 090.6	95.7	1 177.1
June	31	967.9	120.1	1 059.3
September	31	935.6	118.2	1 044.1
December	31	932.1	104.6	939.9
<b>1996</b>				
March	32	842.6	109.8	958.0

<sup>1</sup> Both hardwoods and softwoods, separate details are not available.  
<sup>2</sup> Capable of producing at end of year or actually producing during quarter.  
<sup>3</sup> Data reported by weight, converted to cubic measure by the factor 0.95 m<sup>3</sup> per tonne.  
<sup>4</sup> Includes log equivalent of limbwood and billets.  
(Source: ABS unpublished data.)

## 26

LOGS DELIVERED FOR MILLING OR CHIPPING: **Original**

Year or quarter	Sawmilling and plywood milling			Chipping and grinding <sup>1</sup>			Total		
	Crown land <sup>2</sup>	Private land	Total	Crown land <sup>2</sup>	Private land	Total	Crown land <sup>2</sup>	Private land	Total
	'000 m <sup>3</sup>	'000 m <sup>3</sup>	'000 m <sup>3</sup>	'000 m <sup>3</sup>	'000 m <sup>3</sup>	'000 m <sup>3</sup>	'000 m <sup>3</sup>	'000 m <sup>3</sup>	'000 m <sup>3</sup>
1992-93	698.9	184.3	883.2	1 753.4	1 597.2	3 350.6	2 452.3	1 781.5	4 233.7
1993-94	696.5	203.9	900.4	1 697.0	1 751.8	3 448.8	2 393.5	1 955.7	4 349.2
1994-95	780.3	193.2	973.4	1 966.8	2 097.3	4 064.1	2 747.1	2 290.4	5 037.6
<b>1994</b>									
March	170.9	51.9	222.8	393.7	424.6	818.3	564.6	476.5	1 041.1
June	182.2	48.3	230.4	397.7	443.9	841.6	579.9	492.2	1 072.0
September	199.8	51.1	250.9	481.0	458.8	939.8	680.8	509.9	1 190.7
December	180.6	55.2	235.8	467.9	597.8	1 065.8	648.5	653.0	1 301.6
<b>1995</b>									
March	184.7	34.2	218.9	480.3	610.3	1 090.6	665.0	644.5	1 309.5
June	215.2	52.7	267.8	537.6	430.3	967.9	752.8	483.0	1 235.8
September	212.5	51.7	264.2	438.2	497.4	935.6	650.6	549.2	1 199.8
December	163.9	45.4	209.4	388.3	543.8	932.1	552.2	589.3	1 141.5
<b>1996</b>									
March	200.8	39.0	240.0	405.3	437.3	842.6	606.1	476.3	1 082.4

<sup>1</sup> Logs used are generally below sawmilling standard; includes log equivalent of timberwood and billets.

<sup>2</sup> Comprises all areas (including concession areas) from which royalties are payable to Forestry Tasmania.  
(Source: ABS unpublished data.)

## 27

BUILDING APPROVALS: **Original**

<i>New residential building</i>									
<i>Year or month</i>	<i>Houses</i>		<i>Total dwelling units</i>	<i>Value of total dwelling units</i> \$'000	<i>Conversions etc.</i>	<i>Value of alterations and additions<sup>1</sup> to residential building</i> \$'000	<i>Value of non-residential building<sup>2</sup></i>		<i>Total value of building</i> \$'000
	<i>no.</i>	<i>Other<sup>3</sup></i> <i>no.</i>					<i>Private</i> \$'000	<i>Total</i> \$'000	
1993-94	3 113	1 034	4 147	301 963	11	39 522	81 251	145 922	487 407
1994-95	2 576	596	3 172	244 623	14	39 963	117 984	161 567	446 152
1995-96	1 938	601	2 539	217 445	7	36 890	119 849	216 752	471 086
<b>1993</b>									
June	217	143	360	23 689	2	3 037	6 126	14 627	41 353
<b>1995</b>									
June	148	60	208	15 258	1	3 592	14 036	14 999	33 849
<b>1996</b>									
March	138	27	165	13 759	—	2 846	9 481	12 509	29 113
April	141	104	245	22 811	1	3 669	9 953	11 840	38 321
May	143	32	175	14 219	—	3 014	8 087	32 308	49 541
June	132	62	194	16 159	1	3 472	9 504	11 641	31 272

<sup>1</sup> Valued at \$10,000 and over.  
<sup>2</sup> Comprises non-residential building (new plus alterations and additions) valued at \$50,000 and over.  
<sup>3</sup> New individual dwelling units (e.g. flats, home units and villa units).  
(Source: *Building Approvals, Tasmania*, ABS catalogue number 8731.6.)

## 28

DWELLING COMMENCEMENTS: **Original**

<i>Houses</i>									
<i>Year or month</i>	<i>Double brick</i>	<i>Brick veneer</i>	<i>Fibre cement</i>	<i>Timber</i>	<i>Other and not stated</i>	<i>Total</i>	<i>Other residential buildings<sup>1</sup></i>	<i>Total dwelling units</i>	
	<i>no.</i>	<i>no.</i>	<i>no.</i>	<i>no.</i>	<i>no.</i>	<i>no.</i>	<i>no.</i>	<i>no.</i>	
1992-93	277	1 933	103	447	65	2 825	1 129	3 954	
1993-94	306	2 120	103	441	79	3 049	973	4 022	
1994-95	132	1 816	93	402	62	2 505	645	3 150	
<b>1993</b>									
May	15	176	4	39	1	235	65	300	
<b>1995</b>									
May	14	156	11	36	4	221	32	253	
<b>1996</b>									
February	13	98	11	21	12	155	11	166	
March	25	78	6	20	14	143	14	157	
April	24	71	7	23	6	131	130	261	
May	36	66	4	27	6	139	32	171	

<sup>1</sup> New individual dwelling units (e.g. flats, home units and villa units).  
(Source: *Dwelling Unit Commencements Reported by Approving Authorities, Tasmania*, ABS catalogue number 8741.6.)



## 29

BANKING STATISTICS<sup>1</sup>: Original

Month	Deposits				
	Current bearing interest	Current – not bearing interest	Fixed	Investment savings accounts	Statement savings accounts
	\$m	\$m	\$m	\$m	\$m
<b>1995</b>					
June	545	285	1 549	553	186
July	568	275	1 572	552	188
August	580	270	1 594	550	189
September	599	263	1 673	549	192
October	605	258	1 690	547	189
November	620	270	1 672	546	190
December	628	279	1 659	546	191
<b>1996</b>					
January	646	272	1 646	546	190
February	665	265	1 639	544	174
March	690	271	1 657	550	160
April	689	270	1 693	547	160
May	674	262	1 697	541	158
June	659	260	1 707	541	158

Month	Deposits			
	Passbook/School savings accounts	Other	Total	Loans <sup>2</sup>
	\$m	\$m	\$m	\$m
<b>1995</b>				
June	199	132	3 449	4 166
July	198	128	3 480	4 231
August	194	130	3 507	4 276
September	191	131	3 596	4 304
October	189	132	3 609	4 298
November	185	129	3 612	4 349
December	177	127	3 607	4 374
<b>1996</b>				
January	175	127	3 601	4 372
February	171	127	3 585	4 422
March	171	128	3 626	4 450
April	168	130	3 657	4 471
May	164	127	3 623	4 511
June	161	128	3 615	4 529

<sup>1</sup> Details are the averages of weekly figures for each month. The figures are derived from returns submitted by banks authorised under the *Banking Act* together with similar returns voluntarily submitted by the State banks; they exclude the Reserve Bank.

<sup>2</sup> Excludes non-resident loans.

(Source: Reserve Bank of Australia.)

## 30

PRIVATE NEW CAPITAL EXPENDITURE BY TYPE OF ASSET<sup>1</sup>: Original

Year or quarter	New buildings and structures	Equipment, plant, and machinery	Total
	\$m	\$m	\$m
1992-93	104	342	446
1993-94	100	341	441
1994-95	133	503	636
<b>1995</b>			
March	46	129	175
June	41	170	211
September	51	95	146
December	47	92	139
<b>1996</b>			
March	44	96	140

<sup>1</sup> Estimates based on a sample survey and therefore subject to sampling variability. Covers selected industries only—mining, manufacturing, finance, property and other selected industries.

(Source: *State Estimates of Private New Capital Expenditure*, ABS catalogue number 5646.0.)

# 31

## PASSENGER ARRIVALS AND DEPARTURES, TASMANIA<sup>1</sup>: Original

Period	By air		By sea	Total	Total departures <sup>2</sup>	Cruise ships	
	Interstate arrivals	International arrivals				Arrivals	Departures
1992	652 092	4 428	114 969	771 489	761 109	4 608	4 608
1993	694 244	5 144	115 381	814 769	814 835	2 033	2 033
1994	745 508	4 166	128 644	878 318	880 936	6 592	6 592
1995	811 784	3 982	116 869	932 635	931 278	6 199	6 199
<b>1995</b>							
June	57 146	211	7 678	65 035	62 555	—	—
<b>1996</b>							
April	72 146	355	9 652	82 153	84 390	—	—
May	60 990	182	4 861	66 033	78 425	—	—
June	63 351	120	5 417	68 888	66 010	—	—

<sup>1</sup> The following persons are not included in these statistics: passengers under three years of age accompanied by an adult; passengers travelling on chartered flights with minor carriers; passengers travelling on private or VIP flights; and passengers from or departing for overseas other than direct flights to New Zealand.

<sup>2</sup> The proportion of departing passengers who were visitors was shown to be about 58% in the 1981 Tasmanian Visitor Survey, 55% in the 1984 Tasmanian Visitor Survey, 53% in the 1986 Tasmanian Visitor Survey, 65% in the 1990 Tasmanian Visitor Survey, 60% in the 1994 survey, and 58% in the 1995 Tasmanian Visitor Survey.

(Source: Department of Tourism)

# 32

## TOTAL PASSENGER ARRIVALS BY AIR AND SEA, TASMANIA: Original, seasonally adjusted and trend

Period	Original	Seasonally adjusted <sup>1</sup>	Trend
<b>1995</b>			
June	65 035	78 183	77 636
<b>1996</b>			
April	82 153	75 312	78 876
May	66 033	83 587	80 039
June	68 888	82 722	81 326

<sup>1</sup> There is an annual recalculation of seasonal adjustment factors to include the most recent year's arrivals. This occurs at the end of each financial year and may cause revisions to previously published seasonally adjusted and trend figures. A full time series of seasonally adjusted and trend series from January 1971 is available on request, telephone (002) 20 5870.

(Source: Department of Tourism. ABS unpublished data.)

HOTELS, MOTELS, ETC. WITH FACILITIES						
Period	Original		Room nights		Original	
	Establishments <sup>2</sup> no.	Guest rooms <sup>2</sup> no.	Seasonally adjusted <sup>1</sup> no.	Trend estimates <sup>1</sup> no.	Room occupancy rate %	Takings from accommodation \$'000
<b>March quarter</b>						
1994	178	5 334	n.a.	n.a.	66.2	22 812
1995	177	5 380			68.2	24 963
1996	180	5 520			67.1	26 267
<b>1994</b>						
January	n.a.	n.a.	84 376	85 374	60.8	7 294
February	n.a.	n.a.	85 051	86 504	65.7	7 001
March	178	5 334	86 028	87 624	72.2	8 518
<b>1995</b>						
January	n.a.	n.a.	84 462	86 826	61.8	7 971
February	n.a.	n.a.	89 522	86 896	69.2	7 713
March	177	5 380	89 885	87 220	73.7	9 279
<b>1996</b>						
January	n.a.	n.a.	88 997	90 384	62.6	8 575
February	n.a.	n.a.	91 402	90 016	69.1	8 514
March	180	5 520	87 965	89 676	69.8	9 178
HOLIDAY UNITS						
Period	Original		Unit nights		Original	
	Establishments <sup>2</sup> no.	Units <sup>2</sup> no.	Seasonally adjusted <sup>1</sup> no.	Trend estimates <sup>1</sup> no.	Unit occupancy rate %	Takings from accommodation \$'000
<b>March quarter</b>						
1994	53	797	n.a.	n.a.	70.1	3 725
1995	55	867			72.7	4 391
1996	54	830			64.2	3 835
<b>1994</b>						
January	n.a.	n.a.	12 747	12 684	75.7	1 407
February	n.a.	n.a.	12 716	13 013	65.5	1 087
March	53	797	13 086	13 314	68.6	1 231
<b>1995</b>						
January	n.a.	n.a.	14 001	14 297	75.9	1 649
February	n.a.	n.a.	14 704	14 601	70.1	1 334
March	55	867	14 828	14 780	71.9	1 408
<b>1996</b>						
January	n.a.	n.a.	12 240	12 661	69.0	1 477
February	n.a.	n.a.	12 353	12 515	61.8	1 174
March	54	830	12 136	12 319	61.8	1 184
CARAVAN PARKS						
Period	Original		Site nights		Original	
	Establishments <sup>2</sup> no.	Sites and cabins <sup>2</sup> no.	Seasonally adjusted <sup>1</sup> no.	Trend estimates <sup>1</sup> no.	Site occupancy rate %	Takings from accommodation \$'000
<b>March quarter</b>						
1994	70	6 715	n.a.	n.a.	36.4	2 595
1995	75	6 834			39.2	2 886
1996	72	6 524			42.1	3 126
<b>1994</b>						
January	n.a.	n.a.	58 730	59 316	42.7	1 050
February	n.a.	n.a.	58 669	59 631	35.1	792
March	70	6 715	59 949	60 278	31.4	753
<b>1995</b>						
January	n.a.	n.a.	63 575	65 044	45.5	1 156
February	n.a.	n.a.	65 183	65 070	38.1	887
March	75	6 834	64 164	65 209	34.0	844
<b>1996</b>						
January	n.a.	n.a.	64 854	66 169	48.5	1 249
February	n.a.	n.a.	65 465	66 613	40.4	1 000
March	72	6 524	69 259	67 004	37.3	878

<sup>1</sup> Seasonally adjusted and trend estimates are revised annually because of yearly seasonal re-analysis.  
(Source: Tourist Accommodation, ABS catalogue number 8635.6.)

<sup>2</sup> At end of quarter.

## 34 REGISTRATIONS OF NEW MOTOR VEHICLES<sup>1</sup>: Original

Year or month	Passenger vehicles	Other vehicles <sup>2</sup>	Total (excl. motor cycles)	Vehicles registered by vehicle rental businesses <sup>3</sup>	Motor cycles
	no.	no.	no.	no.	no.
1993	10 019	2 478	12 497	1 507	440
1994	10 543	2 837	13 380	1 708	376
1995	10 919	2 874	13 793	1 952	393
<b>1994</b>					
June	860	383	1 243	21	25
<b>1995</b>					
June	846	368	1 214	16	25
July	772	257	1 029	65	21
August	1 061	208	1 269	245	28
September	1 076	184	1 260	373	36
October	1 072	208	1 280	301	35
November	702	151	853	62	32
December	1 489	245	1 734	842	37
<b>1996</b>					
January	670	203	873	5	36
February	777	212	989	62	48
March	764	197	961	3	33
April	659	159	818	—	30
May	916	286	1 202	3	44
June p	744	250	994	9	32

<sup>1</sup> Includes State and Commonwealth Government-owned motor vehicles other than those belonging to the defence services. Excludes tractors, plant and equipment, caravans and trailers.

<sup>2</sup> Comprises utilities, panel vans, rigid and articulated trucks and other truck-type vehicles (i.e. motor vehicles designed for purposes other than freight carrying, e.g. campervans, tow trucks, ambulances and hearses) and buses.

<sup>3</sup> These figures are included in previous columns.

(Source: *Motor Vehicle Registrations Australia*, ABS catalogue number 9301.0. ABS unpublished data.)

## 35 TURNOVER OF RETAIL ESTABLISHMENTS AT CURRENT PRICES<sup>1</sup>: Original and trend

Period	Original \$m	Trend estimates	
		\$m	Change from corresponding month of previous year %
<b>1994</b>			
June	217.1	231.6	5.9
<b>1995</b>			
June	226.6	237.3	2.5
July	225.3	237.1	2.5
August	230.5	236.9	2.6
September	222.3	237.4	3.1
October	236.0	238.6	4.1
November	251.6	240.3	5.1
December	320.5	242.3	5.8
<b>1996</b>			
January	240.5	244.2	6.1
February	233.5	245.7	5.9
March	241.3	246.9	5.4
April	237.8	248.0	5.0
May	250.3	248.9	5.0
June	230.6	249.8	5.3

<sup>1</sup> Survey has been re-designed—see Information Paper (8511.0).

(Source: *Retail Trade, Australia*, ABS catalogue number 8501.0.)

	NSW	Vic.	Qld	SA	WA	Tas.	Aust. <sup>1</sup>
<b>Population</b>							
Estimated resident population, December 1995 ('000) p	6 155.0	4 521.8	3 316.5	1 475.9	1 747.0	<b>473.2</b>	18 173.6
Proportion of Australian population, December 1995 (%) p	33.9	24.9	18.2	8.1	9.6	<b>2.6</b>	100.0
Population growth rate, 12 months to December 1995 (%) p	1.3	0.8	2.6	0.3	1.9	<b>0.1</b>	1.3
<b>Labour Force</b>							
Employment growth, 12 months to July 1996 (trend series) (%)							
Males	0.7	1.7	3.1	0.2	0.4	<b>1.6</b>	1.3
Females	0.7	0.1	- 0.4	2.1	- 1.0	<b>- 1.5</b>	0.4
Persons	0.7	0.9	1.6	1.1	0.7	<b>0.2</b>	0.9
Unemployment rate (trend series), July 1996 (%)	7.9	8.4	9.2	9.2	7.7	<b>10.9</b>	8.5
Unemployment growth, 12 months to July 1996 (trend series) (%)	4.7	- 4.4	3.2	- 6.3	7.4	<b>16.6</b>	2.2
Participation rate (trend series), July 1996 (%)	62.0	63.0	64.6	62.0	66.1	<b>61.1</b>	63.4
Average weekly overtime worked per employee, May 1996 (hours)	1.2	1.2	1.2	1.1	1.1	<b>0.9</b>	1.1
Job vacancy rate, May 1996 (%)	1.1	0.7	0.6	0.5	0.9	<b>0.5</b>	0.8
Working days lost through industrial disputes, 12 months to May 1996 (days per '000 employees)	122	72	107	55	166	<b>19</b>	101
<b>Wages and Prices</b>							
Average weekly total earnings, full-time adult employees (trend series) May 1996 (\$)							
Males	814.8	765.7	700.8	726.3	810.5	<b>701.1</b>	773.1
Females	632.3	605.4	570.6	568.9	583.6	<b>580.3</b>	605.0
Persons	748.6	712.5	651.2	675.5	729.0	<b>659.5</b>	713.7
Average weekly total earnings, full-time adult employees, growth rate, 12 months to May 1996 (%)	4.4	4.4	1.4	3.7	5.2	<b>3.6</b>	3.9
Consumer price index, all groups, annual growth to June quarter 1996 (%) <sup>2</sup>	3.9	2.6	3.0	2.7	2.6	<b>3.0</b>	3.1
<b>Building</b>							
% change in the number of new residential dwelling units approved in 12 months ended June 1996, over the same period previous year	- 21.3	- 22.7	- 32.8	- 39.0	- 29.5	<b>- 20.0</b>	- 27.0
<b>Finance and Retail Trade</b>							
% change in private new capital expenditure, 12 months ended March 1996, over the same period previous year	4.8	14.3	12.3	- 12.6	11.4	<b>12.5</b>	9.4
% change in trend estimates turnover of retail establishments, June 1996 (change from corresponding month of the previous year)	7.4	3.1	2.8	1.9	5.1	<b>5.3</b>	4.8
<b>Transport</b>							
% change in number of new motor vehicles (excluding motorcycles) registered 12 months ended June 1996, over the same period previous year	- 3.2	0.6	3.9	0.8	- 0.7	<b>- 5.4</b>	- 0.4
<b>Agriculture</b>							
% change in the number of livestock slaughtered 12 months ended June 1996 over the same period previous year							
Cattle and calves	- 1.2	1.7	- 10.8	5.8	0.1	<b>10.4</b>	- 3.1
Sheep and lambs	- 9.6	- 9.6	3.5	- 16.2	- 10.7	<b>- 12.1</b>	- 10.4
<b>Tourism</b>							
Room occupancy rates for hotels, motels etc. with facilities, March quarter 1996 (%)	61.1	57.7	58.7	55.1	59.5	<b>67.1</b>	59.0
<b>Australian National and State Accounts</b>							
% change in GSP (GDP), Average 1989-90 Prices Trend Series							
Dec. qtr 1995 to Mar. qtr 1996	1.0	1.4	0.6	0.9	1.1	<b>0.9</b>	1.0
Mar. qtr 1995 to Mar. qtr 1996	2.5	4.3	2.4	3.7	3.5	<b>2.1</b>	3.4

<sup>1</sup> Australian totals include the ACT and NT.<sup>2</sup> CPI applies to State capitals.

## EXPLANATORY NOTES

### INTRODUCTION

**1** This publication contains latest figures for a comprehensive range of economic indicators. Statistics shown in this publication are the latest available at the date of preparation and may be subject to revision in subsequent issues. In a number of cases figures appearing in this publication are preliminary and are subject to revision in subsequent issues. Reference should therefore always be made to the latest issue or to the statistical publication on the specific subject.

### SEASONAL ADJUSTMENT AND TREND ESTIMATION

**2** Seasonal adjustment is a means of removing the estimated effects of normal seasonal variation from the series so that the effects of other influences on the series can be more clearly recognised. Seasonal adjustment does not aim to remove the irregular or non-seasonal influences which may be present in any particular month. This means that month-to-month movements of the seasonally adjusted estimates may not be reliable indicators of trend behaviour.

**3** The smoothing of seasonally adjusted series reduces the impact of the irregular components of the seasonally adjusted series and creates trend estimates. These trend estimates are derived by applying a 13-term Henderson-weighted moving average to all months except the last six. The last six monthly trend estimates are obtained by applying surrogates of the Henderson average to the seasonally adjusted series. Trend series are used to analyse the underlying behaviour of the series over time.

**4** While this smoothing technique enables estimates to be produced for the latest month, it does result in revisions to the most recent months as additional observations become available. Generally, subsequent revisions become smaller and after 3 months have a negligible impact on the series. Revisions also occur as a result of the annual review of seasonal factors.

**5** Users may wish to refer to the ABS Publication *A Guide to Interpreting Time Series – Monitoring 'Trends' – An Overview* (1348.0) for more detailed information on smoothing seasonally adjusted time series data.

### RELATED PUBLICATIONS

**6** Current publications produced by the ABS are listed in the *Catalogue of Publications and Products* (1101.0). The ABS also issues, on Tuesdays and Fridays, the *Release Advice* (1105.0) which lists publications to be released in the next few days. The *Catalogue* and *Release Advice* are available from any ABS office.

### UNPUBLISHED STATISTICS

**7** As well as the statistics included in this and related publications, the ABS may have other relevant unpublished data available. Inquiries should be made to Information Inquiries on (002) 20 5800 or to any ABS office.

### EFFECTS OF ROUNDING

**8** Some figures have been rounded and discrepancies may occur between totals and sums of the component items.

### SYMBOLS AND OTHER USAGES

n.a.	not available
n.y.a.	not yet available
..	not applicable
—	nil or rounded to zero
p	preliminary—figure or series subject to revision
r	figure or series revised since previous issue

## **For more information . . .**

The ABS publishes a wide range of statistics and other information on Australia's economic and social conditions. Details of what is available in various publications and other products can be found in the ABS Catalogue of Publications and Products available from all ABS Offices.

### **ABS Products and Services**

Many standard products are available from ABS bookshops located in each State and Territory. In addition to these products, information tailored to the needs of clients can be obtained on a wide range of media by contacting your nearest ABS Office. The ABS also provides a Subscription Service for standard products and some tailored information services.

### **National Dial-a-Statistic Line**

0055 86 400

*Steadycam P/L: premium rate 25c/21.4 secs.*

This number gives 24-hour access, 365 days a year, for a range of important economic statistics including the CPI.

### **Internet**

<http://www.statistics.gov.au>

A wide range of ABS information is available via the Internet, with basic statistics available for each State, Territory and Australia. We also have Key National Indicators, ABS product release details and other information of general interest.

## **Sales and Inquiries**

Keylink STAT.INFO/ABS  
X.400 (C:Australia,PUB:Telememo,O:ABS, FN:STAT,SN:INFO)  
Internet stat.info@abs.telememo.au

National Mail Order Service (06) 252 5249  
Subscription Service 1800 02 0608

	<b>Information Inquiries</b>	<b>Bookshop Sales</b>
SYDNEY	(02) 9268 4611	(02) 9268 4620
MELBOURNE	(03) 9615 7755	(03) 9615 7755
BRISBANE	(07) 3222 6351	(07) 3222 6350
PERTH	(09) 360 5140	(09) 360 5307
ADELAIDE	(08) 237 7100	(08) 237 7582
CANBERRA	(06) 252 6627	(06) 207 0326
HOBART	(002) 205 800	(002) 205 800
DARWIN	(08) 89432 111	(08) 89432 111



Client Services, ABS, PO Box 10, Belconnen ACT 2616

Produced by the Australian Government Publishing Service  
© Commonwealth of Australia 1996

Recommended retail price: \$16.50



2130360009967  
ISSN 1034-1803